



HOMESTEAD GARDENS

Plant FINDER

Davidsonville, MD | Severna Park, MD | Smyrna, MD
(410) 798-5000 | HomesteadGardens.com



Dwarf Globe Japanese Cedar

Cryptomeria japonica 'Globosa Nana'

Height: 3 feet

Spread: 3 feet

Sunlight:

Hardiness Zone: 4b

Description:

A rare compact garden detail plant; forms a dense mounded pyramid with blue green needles that turn light brown over the winter

Ornamental Features

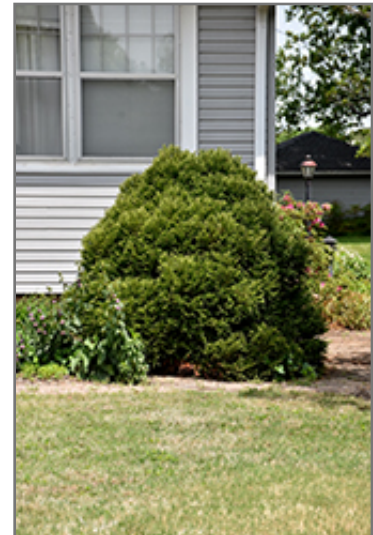
Dwarf Globe Japanese Cedar is a dwarf conifer which is primarily valued in the garden for its ornamental globe-shaped form. It has attractive bluish-green evergreen foliage. The scale-like sprays of foliage are highly ornamental and turn antique red in the fall, which persists throughout the winter.

Landscape Attributes

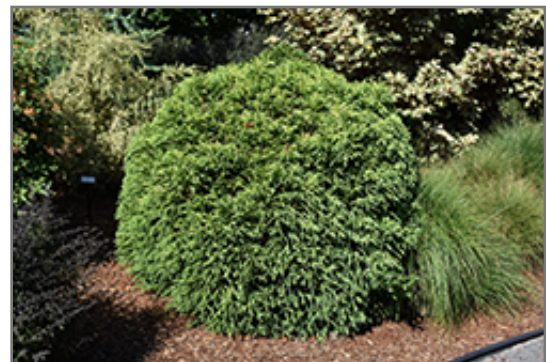
Dwarf Globe Japanese Cedar is a multi-stemmed evergreen shrub with a more or less rounded form. It lends an extremely fine and delicate texture to the landscape composition which should be used to full effect.

This is a relatively low maintenance shrub, and should not require much pruning, except when necessary, such as to remove dieback. It has no significant negative characteristics.

Dwarf Globe Japanese Cedar is recommended for the following landscape applications;



Dwarf Globe Japanese Cedar
Photo courtesy of NetPS Plant Finder



Dwarf Globe Japanese Cedar
Photo courtesy of NetPS Plant Finder



HOMESTEAD GARDENS

Plant FINDER

Davidsonville, MD | Severna Park, MD | Smyrna, MD
(410) 798-5000 | HomesteadGardens.com

- Mass Planting
- Hedges/Screening
- Rock/Alpine Gardens
- General Garden Use
- Container Planting

Planting & Growing

Dwarf Globe Japanese Cedar will grow to be about 3 feet tall at maturity, with a spread of 3 feet. It tends to fill out right to the ground and therefore doesn't necessarily require facer plants in front. It grows at a slow rate, and under ideal conditions can be expected to live for 40 years or more.

This shrub does best in full sun to partial shade. It prefers to grow in average to moist conditions, and shouldn't be allowed to dry out. It is particular about its soil conditions, with a strong preference for rich, acidic soils, and is able to handle environmental salt. It is quite intolerant of urban pollution, therefore inner city or urban streetside plantings are best avoided, and will benefit from being planted in a relatively sheltered location. Consider applying a thick mulch around the root zone in winter to protect it in exposed locations or colder microclimates. This is a selected variety of a species not originally from North America.

Dwarf Globe Japanese Cedar makes a fine choice for the outdoor landscape, but it is also well-suited for use in outdoor pots and containers. Because of its height, it is often used as a 'thriller' in the 'spiller-thriller-filler' container combination; plant it near the center of the pot, surrounded by smaller plants and those that spill over the edges. It is even sizeable enough that it can be grown alone in a suitable container. Note that when grown in a container, it may not perform exactly as indicated on the tag - this is to be expected. Also note that when growing plants in outdoor containers and baskets, they may require more frequent waterings than they would in the yard or garden.